

**CANDUCCI**<sup>®</sup>  
since 1940

Timber Building Solutions



Grandi Opere

Benvenuti nella cultura del  
Green Building e del Legno  
Ingegnerizzato.  
Benvenuti nelle nostre  
radici e nella nostra storia.

*Welcome to the culture of  
Green building and  
Engineered Timber  
Welcome to our roots  
and history.*

## CANDUCCI SINCE 1940

E' il brand della famiglia Canducci che lavora nel settore del legno dal 1940, oggi la quarta generazione collabora alla continua crescita e sviluppo delle attività nel mercato globale delle costruzioni.

Il nome Canducci è presente in tre società familiari distinte e indipendenti che operano con gestione autonoma, per offrire le migliori soluzioni tecniche ed economiche su misura, secondo norme internazionali, con materiali certificati.

*It is the brand of the Canducci Family working in the timber business since 1940, today the fourth generation is involved and cooperates for the constant growth and development of the activity in the global construction market. The name Canducci is present in three family companies with independent management, offering the best technical and cost solutions, customized according to international norms and with certified goods.*



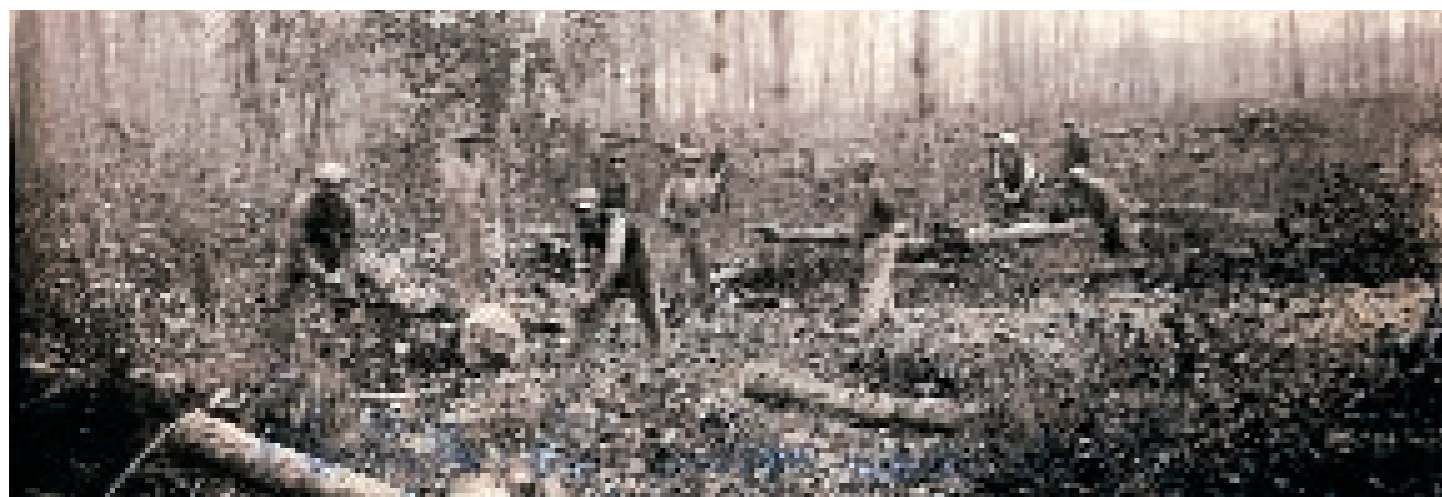
Grandi costruzioni di legno ingegnerizzato, in Italia e all'estero  
*Great glulam constructions, in Italy and abroad*



L'impresa per le costruzioni di piccola e media dimensione in Italia  
*The company for small and medium buildings in Italy*



La società con sede in Inghilterra che opera nel mercato britannico  
*The England-based company that works in the UK market*



1942 Canducci Bonfiglio al lavoro nel bosco

1942 Canducci Bonfiglio at work in the forest

## PROGETTIAMO E COSTRUIAMO STRUTTURE, INVOLUCRI E CASE DI LEGNO INGEGNERIZZATO

Interpretiamo le idee di progettisti e committenti e le realizziamo nel modo migliore. La nostra esperienza, maturata con la partecipazione alla costruzione di oltre 3.000 opere in Italia e all'estero, ci permette di offrire servizi e soluzioni su misura, dalle prime fasi del progetto fino alla costruzione in cantiere.

## WE DESIGN AND BUILD STRUCTURES, SHELLS AND HOUSES WITH ENGINEERED TIMBER

*We interpret clients and designers ideas and turn them into reality in the best possible way. Our experience gained through the participation at the building process of over 3.000 works in Italy and abroad, allows us to offer customized services and solutions, from the first project stages up to the installation onsite.*

## PARTNERSHIP

Per rispondere alle esigenze individuali dei propri committenti e offrire soluzioni taylor-made, CANDUCCI collabora con i più qualificati produttori internazionali. La scelta e la combinazione dei vari prodotti di legno ingegnerizzato, ci consente di ottimizzare i costi e i tempi di esecuzione dei lavori.

*To meet each single need of its customers and to offer tailored solutions, CANDUCCI works with the most qualified International manufacturers. The choice and the combination of the various products of engineered timber allows us to optimize costs and time to implement the works.*

**Project Partner Internazionale** del gruppo Austriaco Mayr Melnhof Holz, leader europeo nella produzione di elementi e pannelli strutturali.

**International Project Partner** of the Austrian group Mayr Melnhof Holz, Europe's leading manufacturer of structural elements and panels.

**Partner esclusivo** in Italia del gruppo Americano LAMBOO, specializzato nella produzione di elementi e pannelli strutturali di bamboo.

**Exclusive Partner** in Italy of the American group LAMBOO, specialized in the production of structural elements and panels of bamboo.



## SERVIZI

Supporto tecnico a progettisti e imprese.  
Studi di fattibilità e preventivi di costo.  
Progettazione esecutiva e calcoli statici.  
Disegni di produzione legno e acciaio.  
Programma di produzione e logistica delle consegne.  
Coordinamento delle fasi di montaggio.  
Assistenza tecnica e operativa.  
As Built, piano di manutenzione.  
Certificati dei materiali.

## SERVICES

*Technical advice to designers and building companies.  
Feasibility studies and quotations.  
Working drawings and static calculations.  
Steel and timber shop drawings.  
Production plan and delivery logistic management.  
Installation coordination.  
Technical assistance.  
As Built drawings, maintenance plan.  
Material certificates.*

## Sede - Headquarter

Via Montello 4  
61121 PESARO - IT  
T +39 0721 34323  
F +39 0721 33148  
[info@canducci1940.it](mailto:info@canducci1940.it)

## Ufficio di Roma - Rome Office

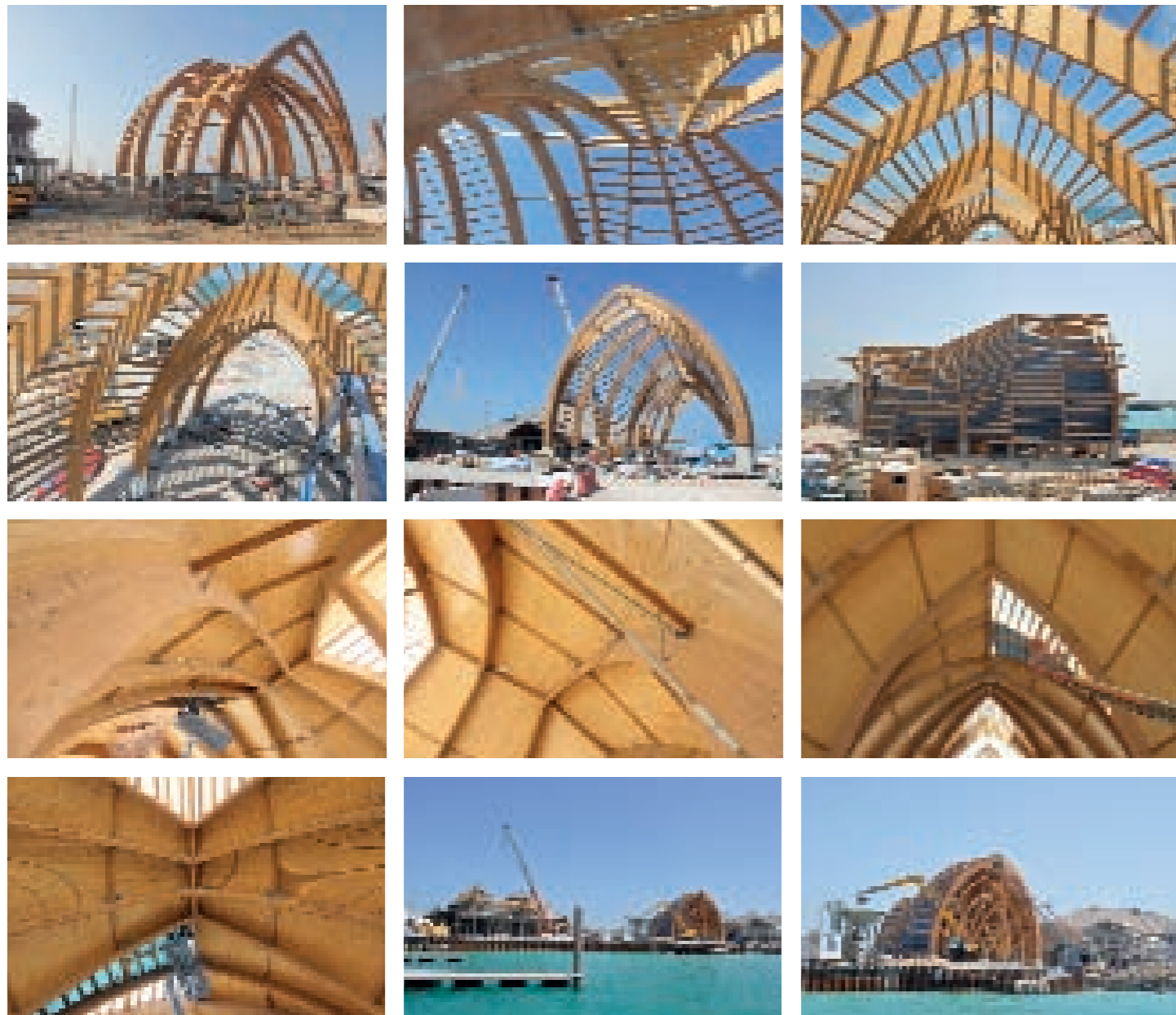
Via Po 102  
00198 ROMA - IT  
T +39 06 85398918  
F +39 06 84080505  
[roma@canducci1940.it](mailto:roma@canducci1940.it)

**I risultati di una  
costante evoluzione  
della cultura del  
legno della  
famiglia Canducci**

***The results of a  
continuous  
evolution  
of Canducci family  
timber culture***







**Località / Location**  
Doha - QATAR

**Tipologia / Typology**  
RESORT

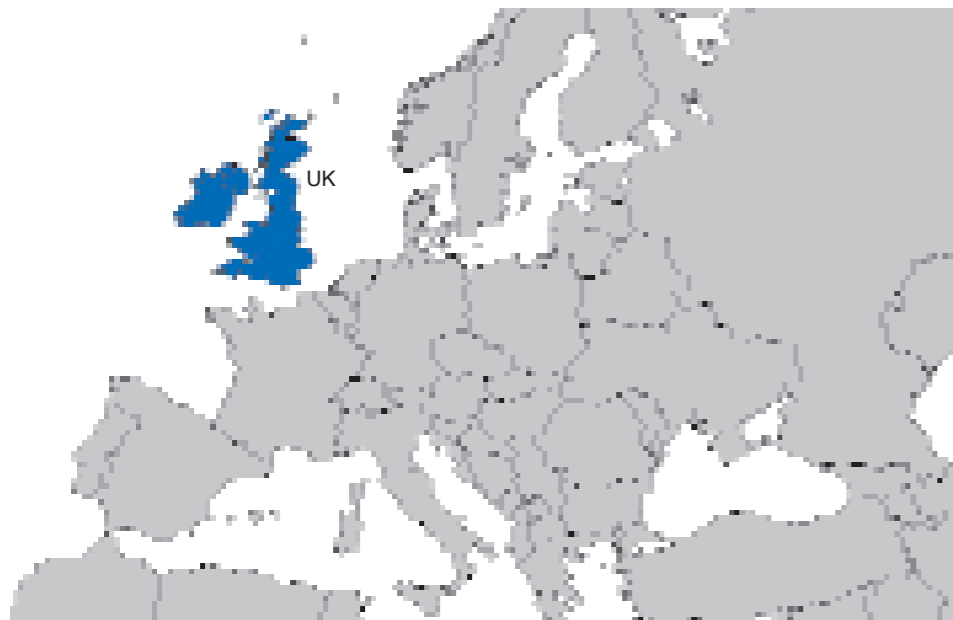
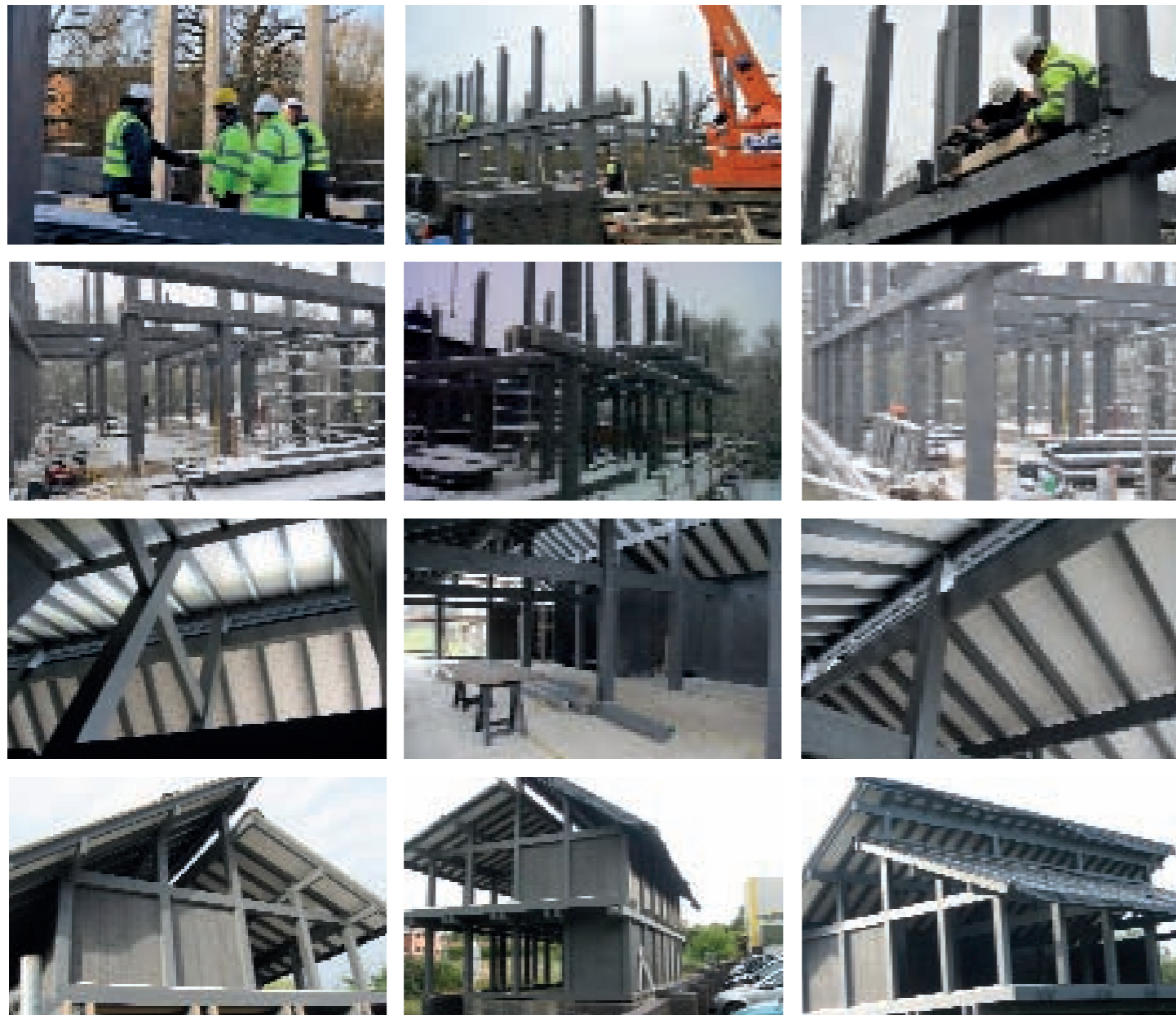
**Sistema statico / Static system**  
PORTALI / PORTALS

**Superficie / Surface**  
2.000 m<sup>2</sup>

**Legno lamellare / Glulam**  
270 m<sup>3</sup>

**Acciaio / Steel**  
8.200 Kg





**Località / Location**  
Stratford upon Avon - UK

**Tipologia / Typology**  
UFFICI / OFFICES

**Sistema statico / Static system**  
TELAIO / FRAMEWORK

**Superficie / Surface**  
900 m<sup>2</sup>

**Legno lamellare / Glulam**  
90 m<sup>3</sup>

**Acciaio / Steel**  
1.600 Kg







**Località / Location**  
Port-Au-Prince - HAITI

**Tipologia / Typology**  
REFETTORIO / DINING HALL

**Sistema statico / Static system**  
BLOCK BAU

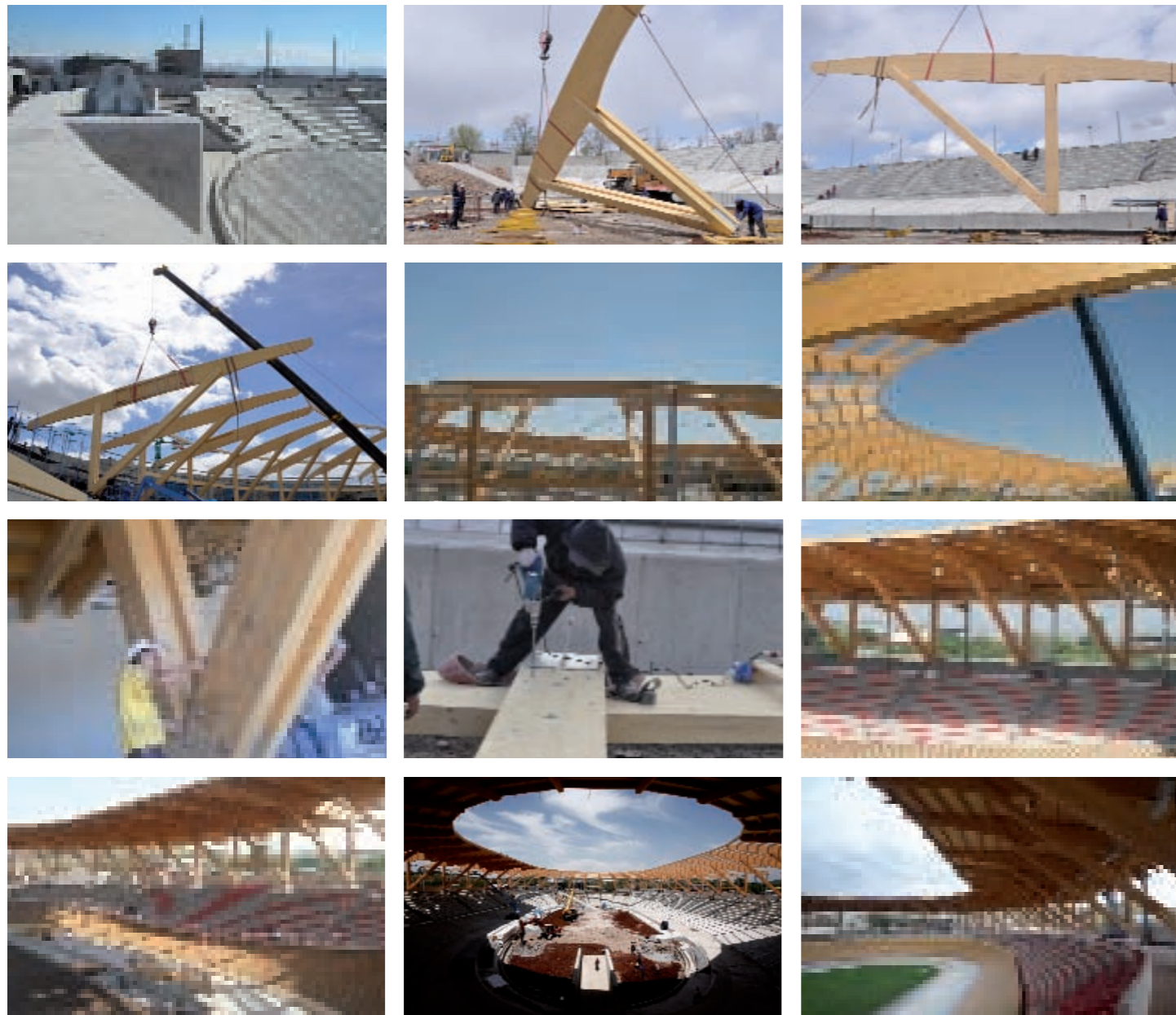
**Superficie / Surface**  
200 m<sup>2</sup>

**Legno lamellare / Glulam**  
120 m<sup>3</sup>

**Acciaio / Steel**  
200 Kg







**Località / Location**  
Yerevan - ARMENIA

**Tipologia / Typology**  
VELODROMO / VELODROME

**Sistema statico / Static system**  
TELAI A SBALZO  
CANTILEVER FRAMES

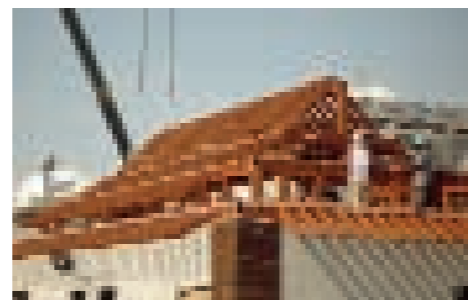
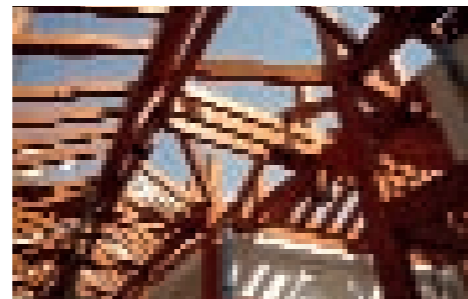
**Superficie / Surface**  
6.000 m<sup>2</sup>

**Legno lamellare / Glulam**  
760 m<sup>3</sup>

**Acciaio / Steel**  
60.000 Kg

**Pannelli multistrato / 3-ply panels**  
6.500 m<sup>2</sup>





**Località / Location**  
Dubai - EMIRATI ARABI UNITI

**Tipologia / Typology**  
VILLA

**Sistema statico / Static system**  
CAPRIATE ISOSTATICHE  
ISOSTATIC TRUSSES

**Superficie / Surface**  
1.900 m<sup>2</sup>

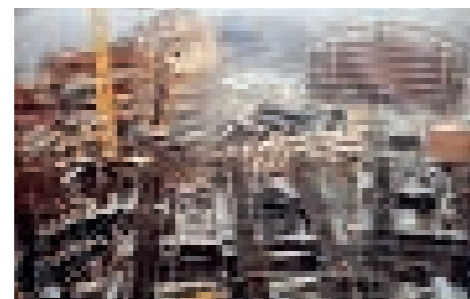
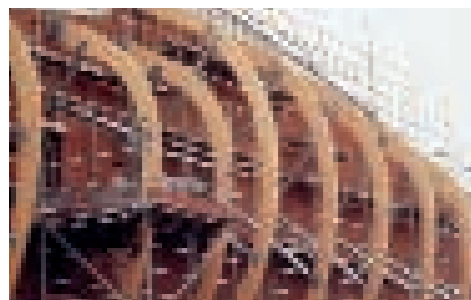
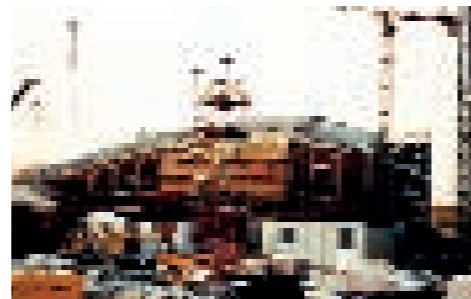
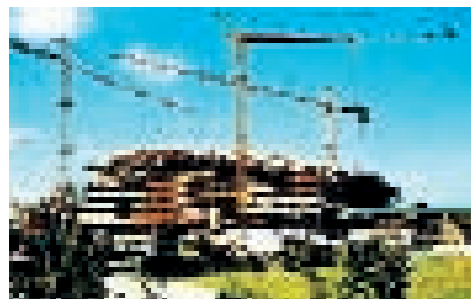
**Legno lamellare / Glulam**  
120 m<sup>3</sup>

**Acciaio / Steel**  
1.000 Kg









**Località / Location**  
ROMA

**Tipologia / Typology**  
AUDITORIUM

**Sistema statico / Static system**  
ARCHI RETICOLARI CON  
CATENE DI ACCIAIO  
RETICULAR ARCHES WITH  
STEEL CHORDS

**Superficie / Surface**  
17.000 m<sup>2</sup>

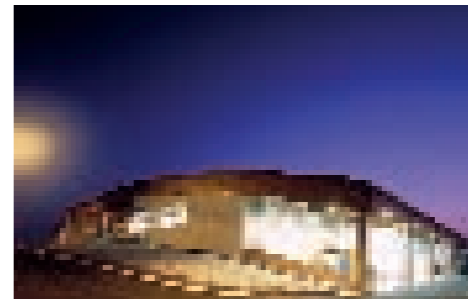
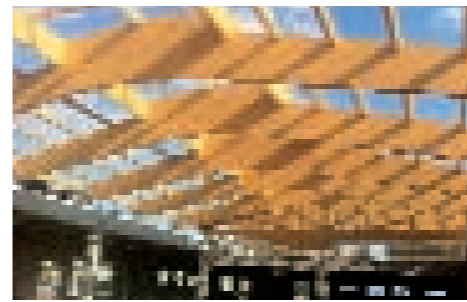
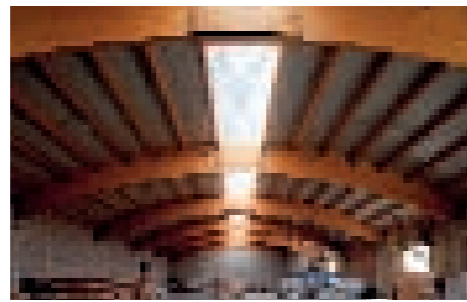
**Luce massima / Max. span**  
75 mt

**Legno lamellare / Glulam**  
1.800 m<sup>3</sup>

**Acciaio / Steel**  
1.000.000 Kg

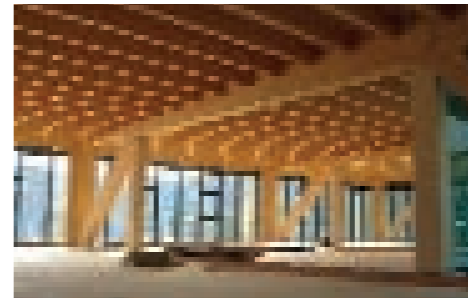
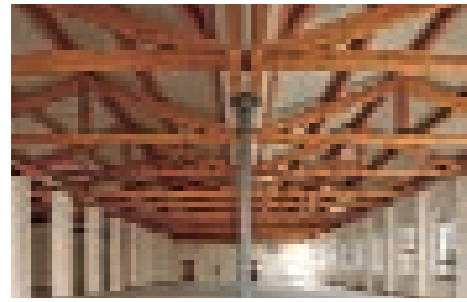
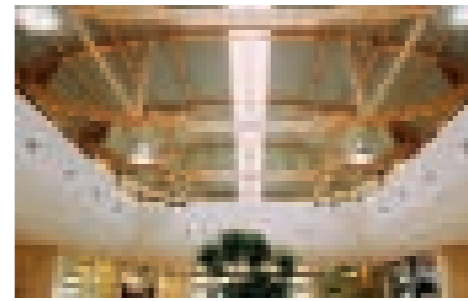
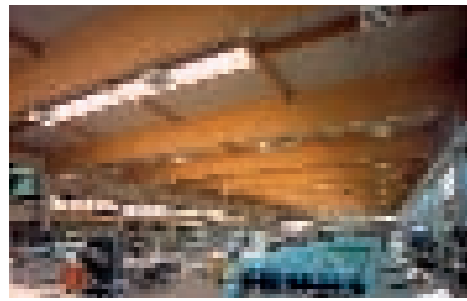
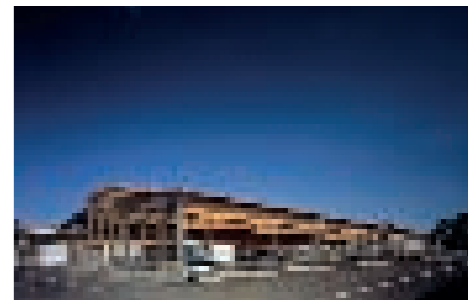
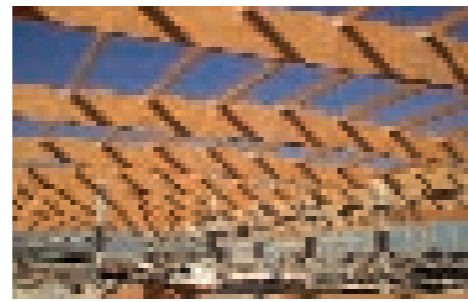
**Pannelli multistrato / 3-ply panels**  
9.000 m<sup>2</sup>





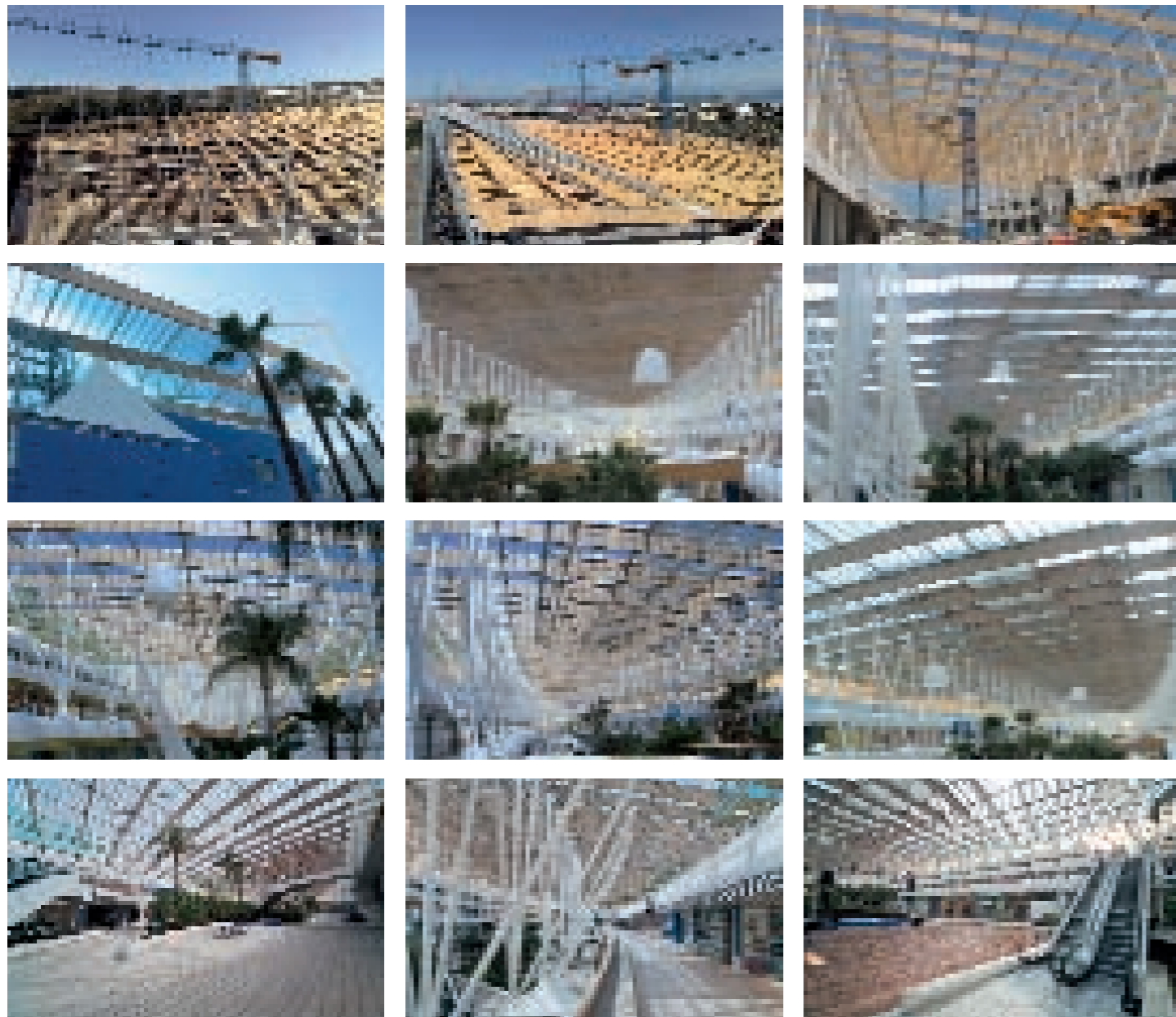
**CENTRI  
COMMERCIALI  
INDUSTRIALI AGRICOLI**

**COMMERCIAL  
INDUSTRIAL  
AGRICULTURE CENTERS**









**Località / Location**  
Melilli - SIRACUSA

**Tipologia / Typology**  
CENTRO COMMERCIALE  
SHOPPING CENTER

**Sistema statico / Static system**  
TELAJ STRALLATI LEGNO E ACCIAIO  
TIMBER AND STEEL STIFFENED  
FRAMES

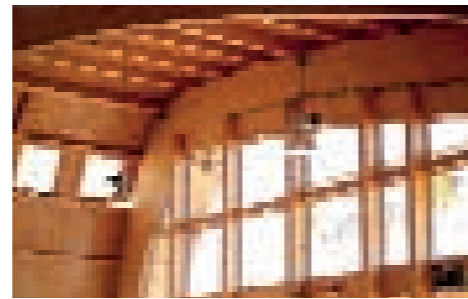
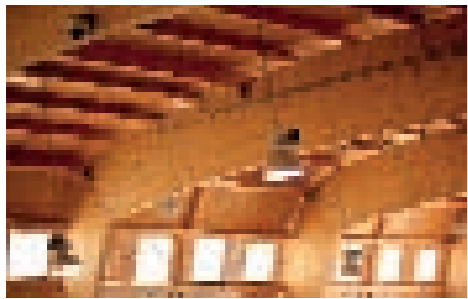
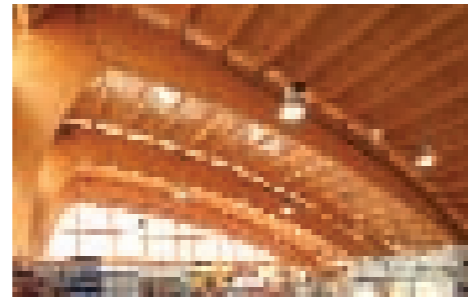
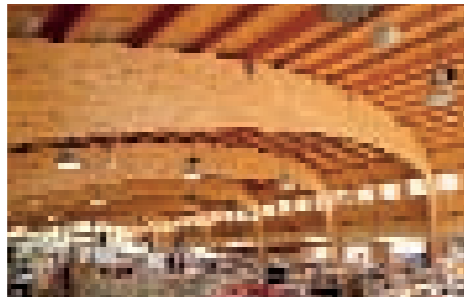
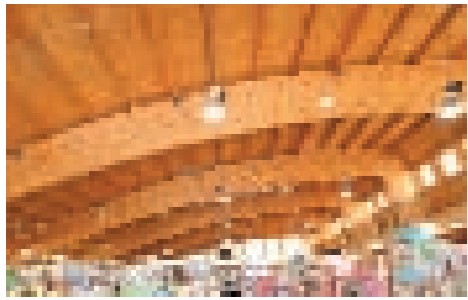
**Superficie / Surface**  
24.000 m<sup>2</sup>

**Lunghezza campata / Span length**  
fino a 100 mt

**Legno lamellare / Glulam**  
1.000 m<sup>3</sup>

**Acciaio / Steel**  
400.000 Kg





**Località / Location**  
Sella Marina - CATANZARO

**Tipologia / Typology**  
CENTRO COMMERCIALE  
SHOPPING CENTER

**Sistema statico / Static system**  
PORTALI / PORTALS

**Superficie / Surface**  
2.000 m<sup>2</sup>

**Luce massima / Max. span**  
24 mt

**Legno lamellare / Glulam**  
150 m<sup>3</sup>

**Acciaio / Steel**  
4.000 Kg





**Località / Location**  
TRENTO

**Tipologia / Typology**  
UFFICI - SOPRAELEVAZIONE  
OFFICES - TOP EXTENSION

**Sistema statico / Static system**  
TRAVI RETICOLARI  
RETICULAR BEAMS

**Superficie solaio + tetto**  
*Floor and roof surface*  
1.200 + 1.200 m<sup>2</sup>

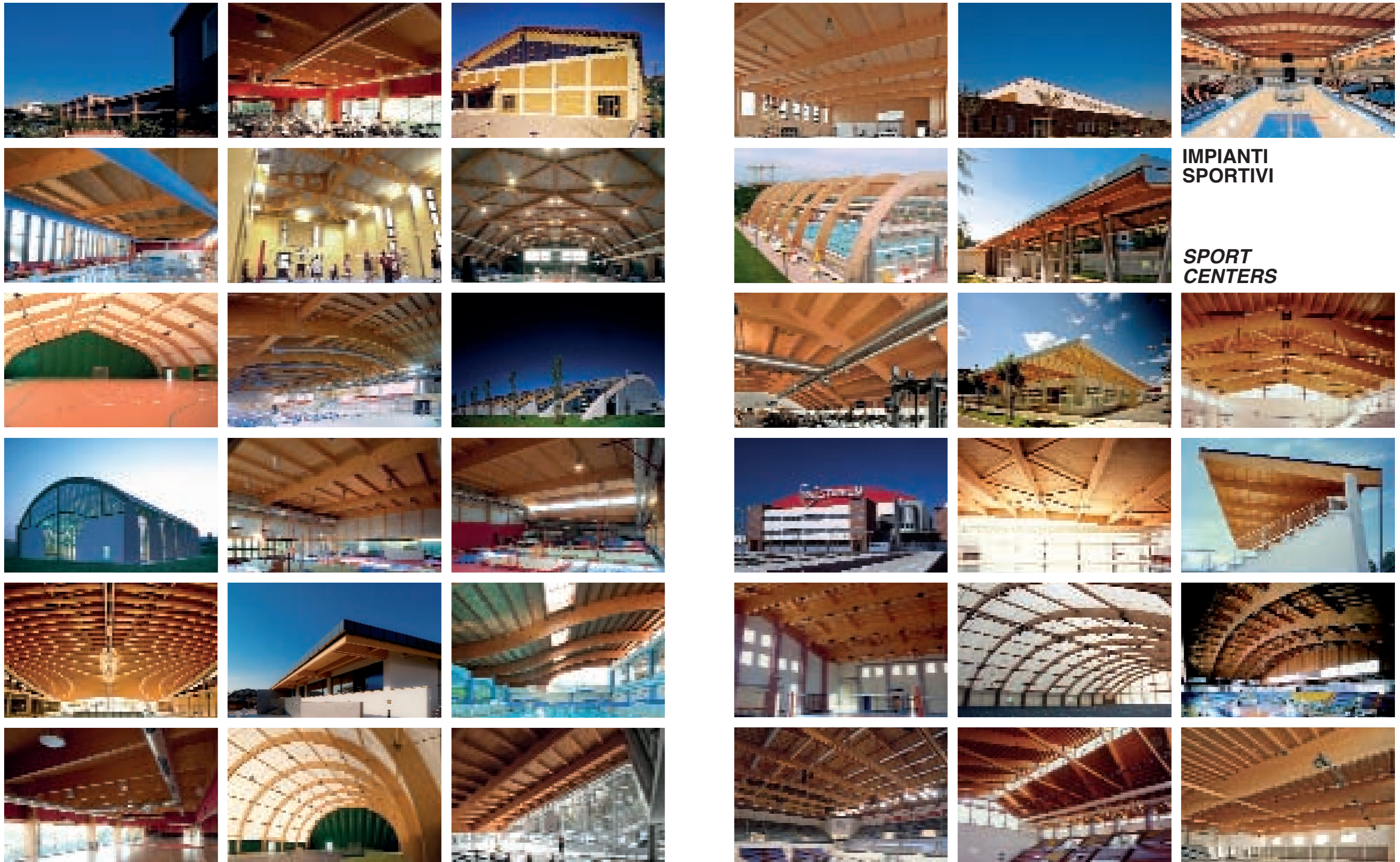
**Luce massima / Max. span**  
20 mt

**Legno lamellare / Glulam**  
440 m<sup>3</sup>

**Acciaio / Steel**  
25.000 Kg

**Pannelli multistrato / 3-ply panels**  
3.000 m<sup>2</sup>

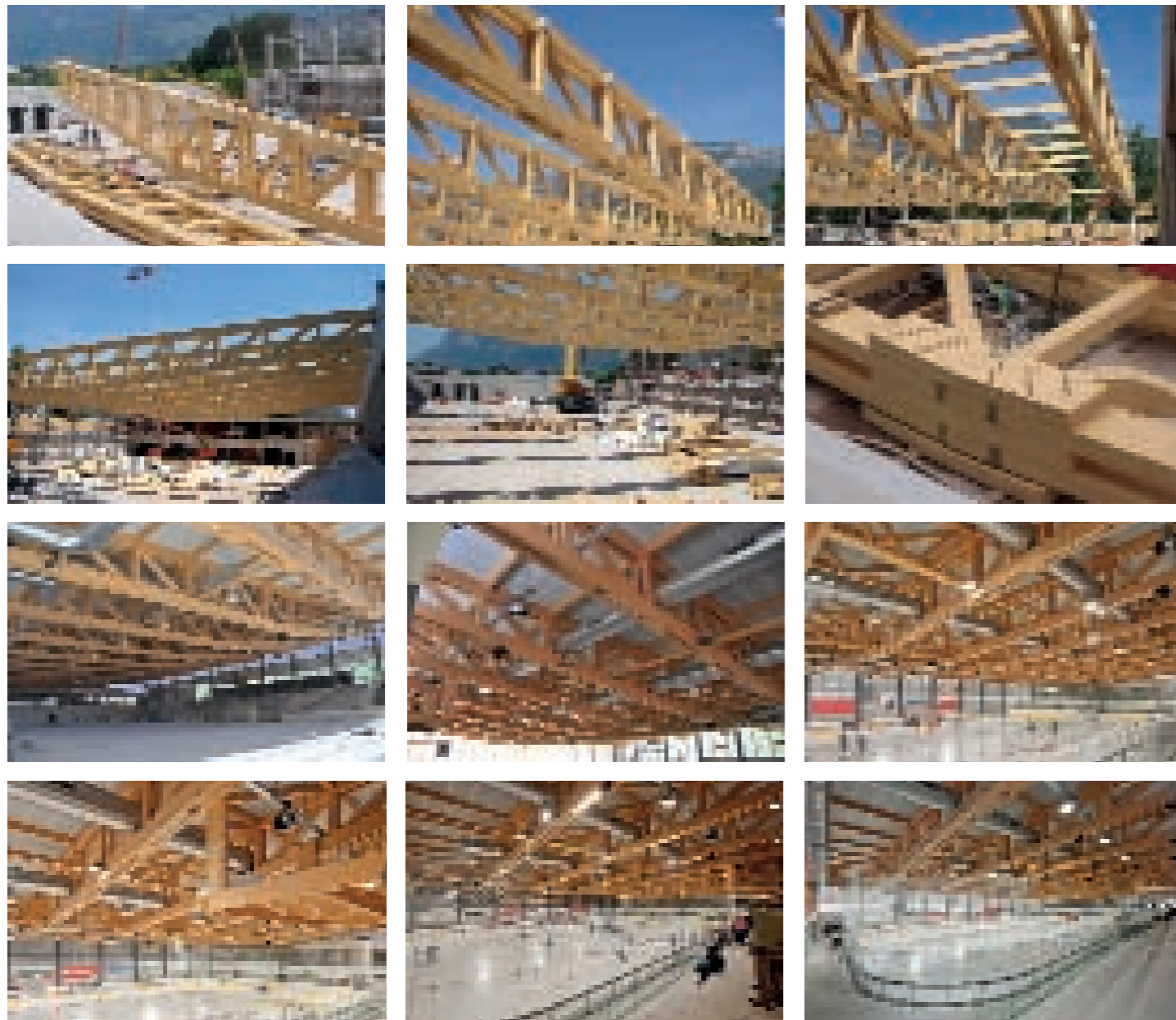




**IMPIANTI  
SPORTIVI**

**SPORT  
CENTERS**





**Località / Location**  
Egnà - BOLZANO

**Tipologia / Typology**  
PALAGHIACCIO / ICE STADIUM

**Sistema statico / Static system**  
TRAVI RETICOLARI  
RETICULAR BEAMS

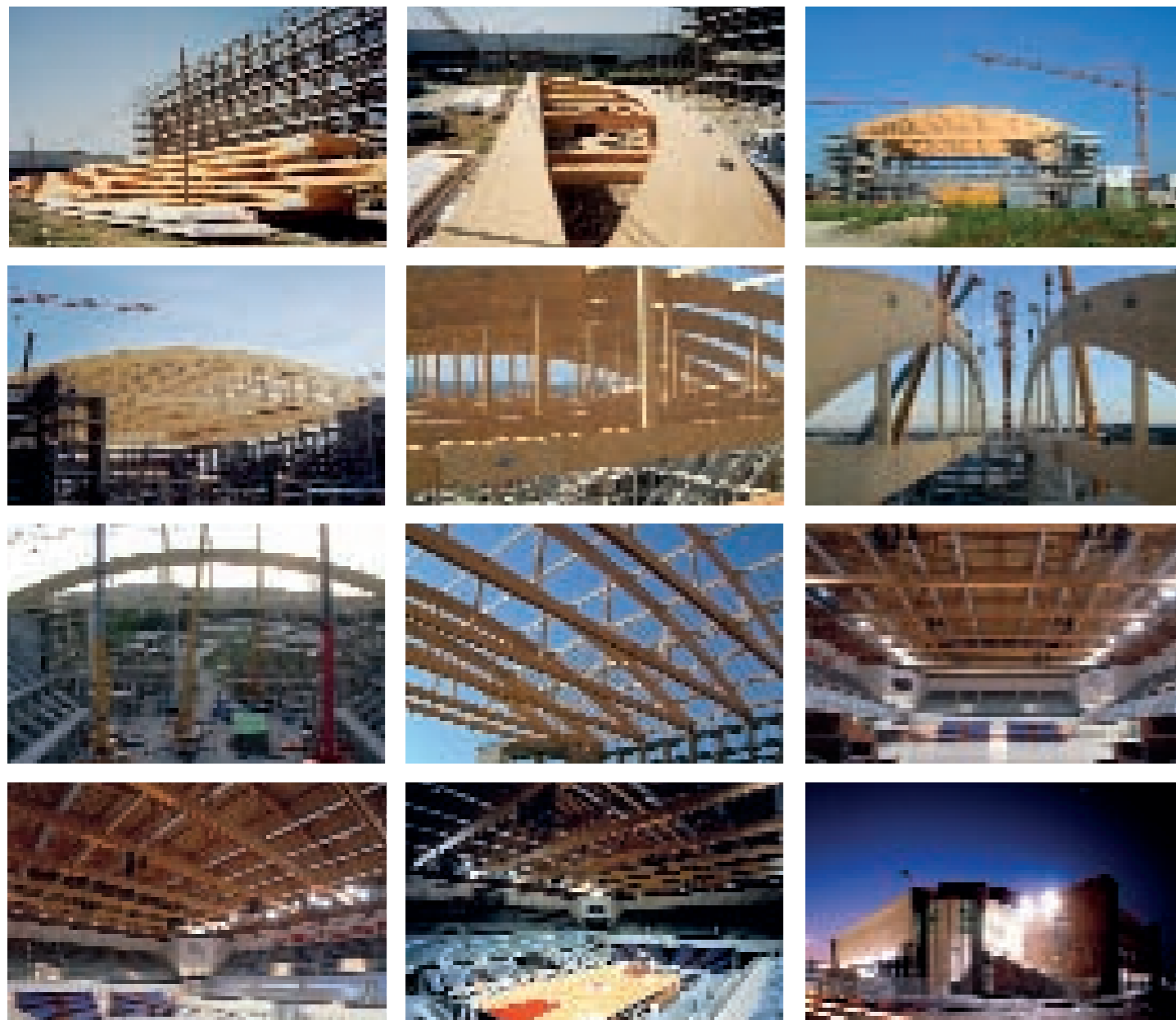
**Superficie / Surface**  
3.000 m<sup>2</sup>

**Luce massima / Max. span**  
40 mt

**Legno lamellare / Glulam**  
450 m<sup>3</sup>

**Acciaio / Steel**  
18.000 Kg





**Località / Location**  
RIMINI

**Tipologia / Typology**  
PALASPORT / SPORT STADIUM

**Sistema statico / Static system**  
TRAVI RETICOLARI  
RETICULAR BEAMS

**Superficie / Surface**  
4.500 m<sup>2</sup>

**Luce massima / Max. span**  
65 mt

**Legno lamellare / Glulam**  
650 m<sup>3</sup>

**Acciaio / Steel**  
30.000 Kg







**Località / Location**  
Monte Porzio Catone - ROMA

**Tipologia / Typology**  
PALESTRA / GYM

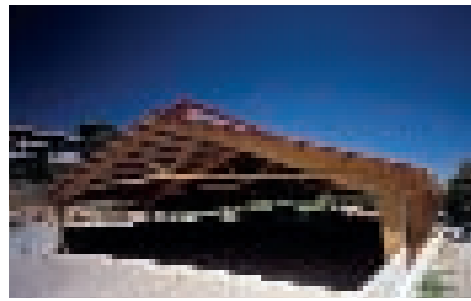
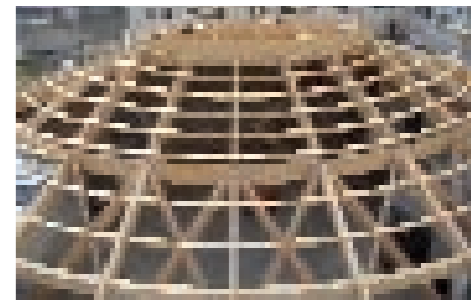
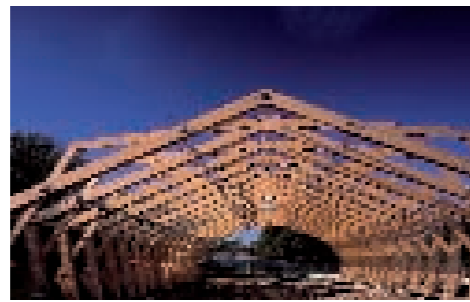
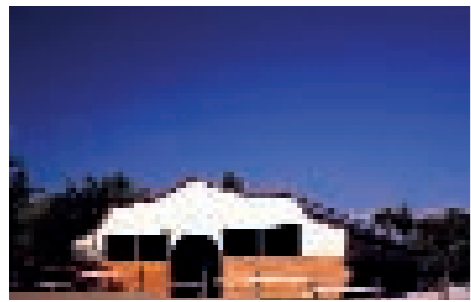
**Sistema statico / Static system**  
TELAIO / FRAME

**Superficie / Surface**  
900 m<sup>2</sup>

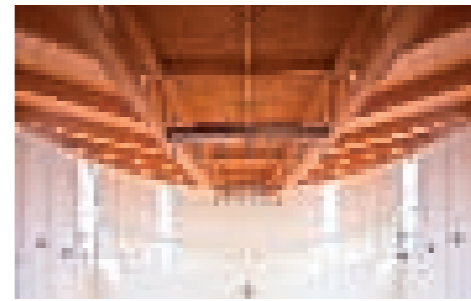
**Legno lamellare / Glulam**  
250 m<sup>3</sup>

**Acciaio / Steel**  
9.000 Kg

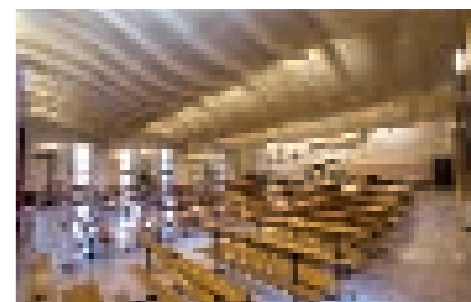
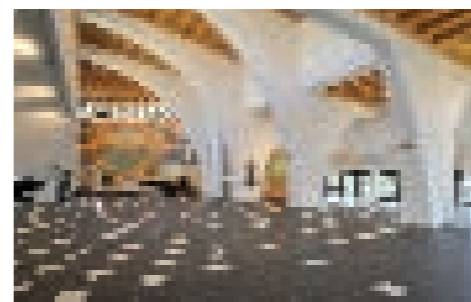
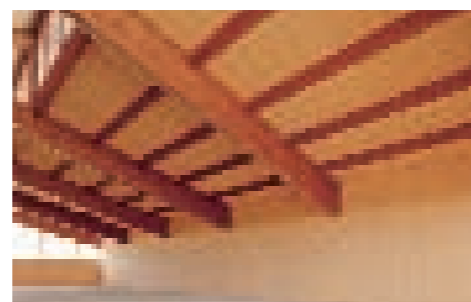
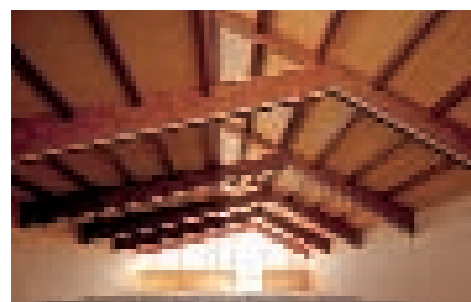
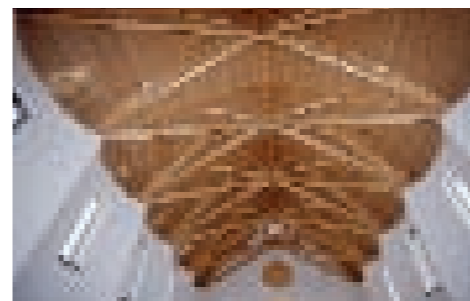
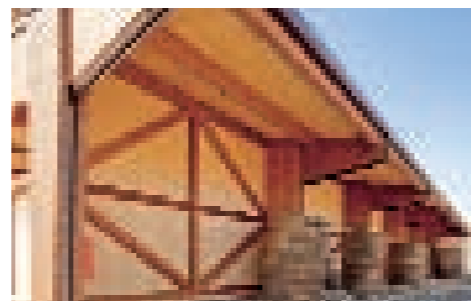
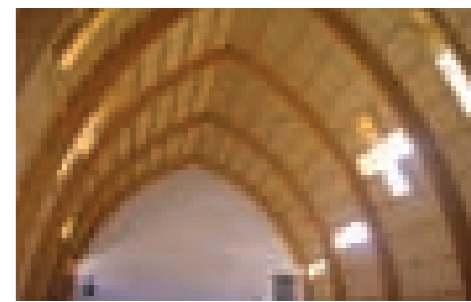
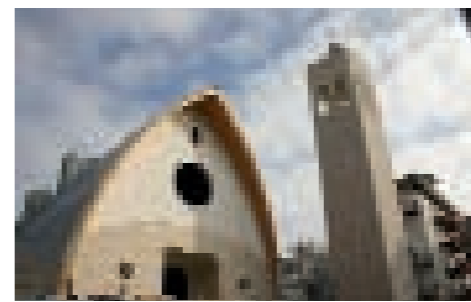
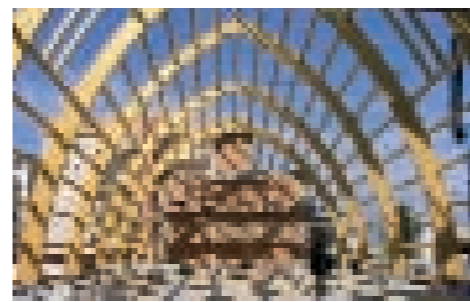
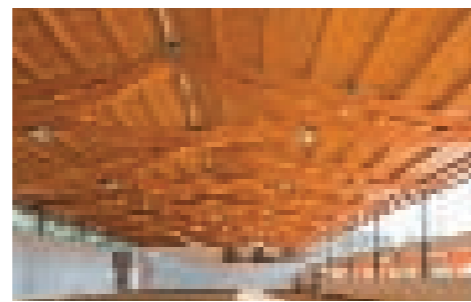
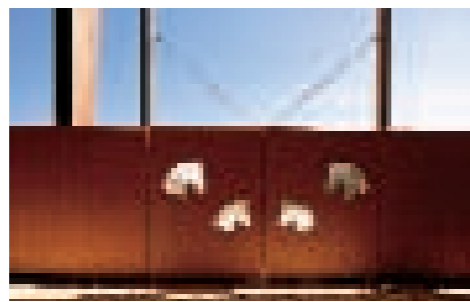
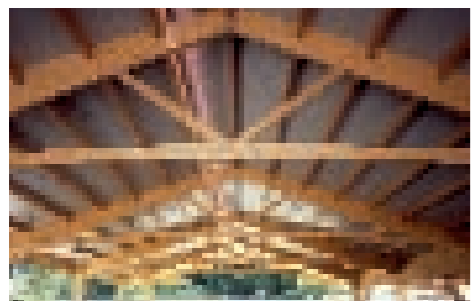
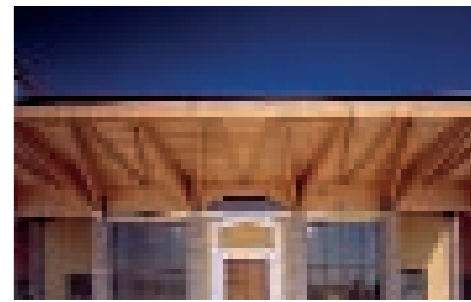
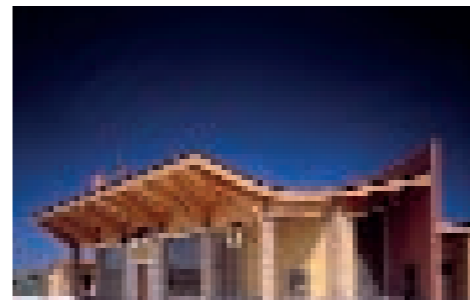
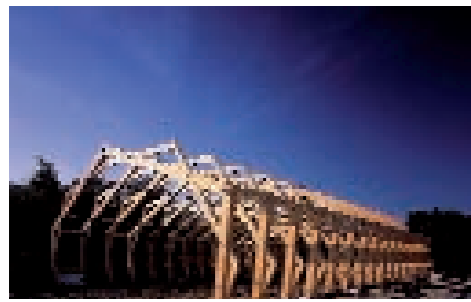




**CENTRI  
IPPICI**

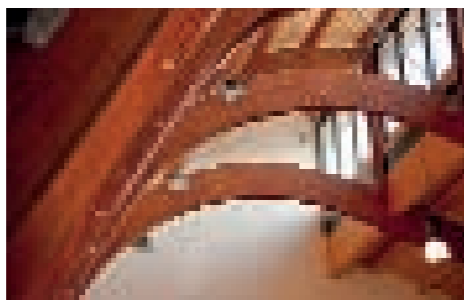
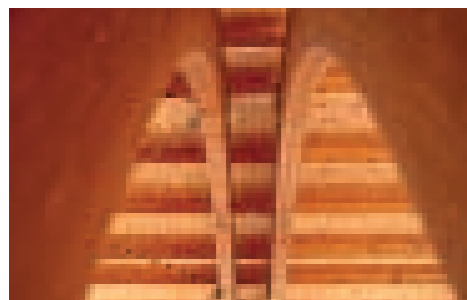
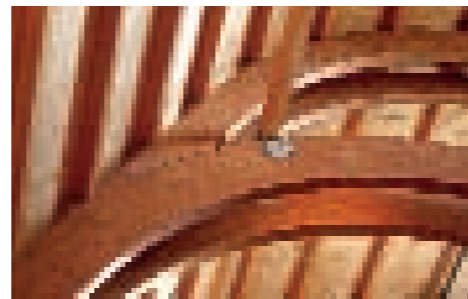
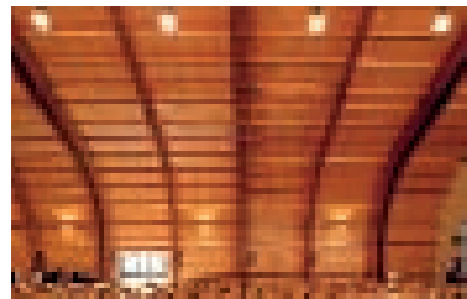
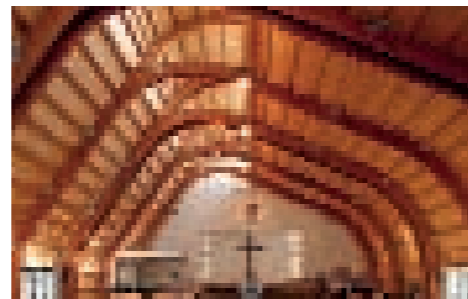
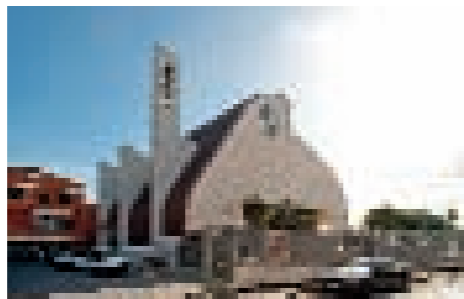
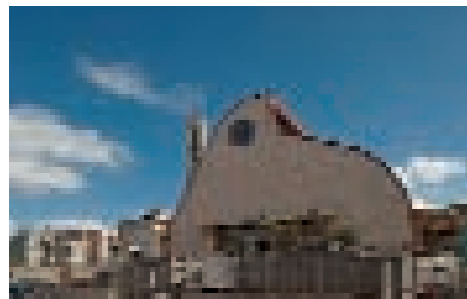


**CHIESE**



**RIDING  
CENTERS**

**CHURCHES**



**Località / Location**  
NAPOLI

**Tipologia / Typology**  
CHIESA / CHURCH

**Sistema statico / Static system**  
PORTALI / PORTALS

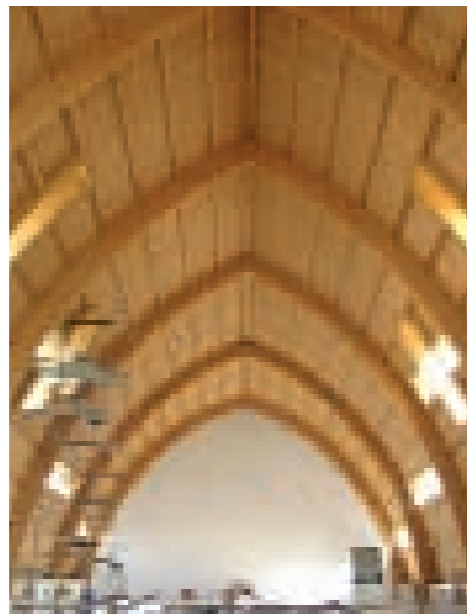
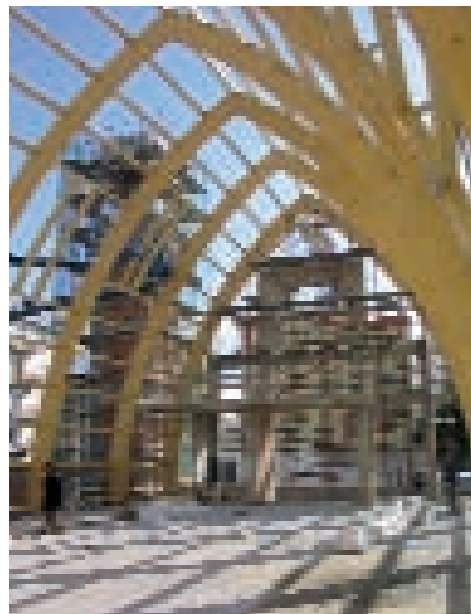
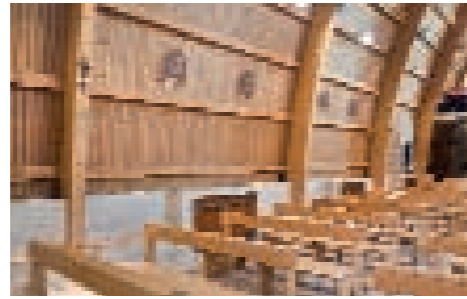
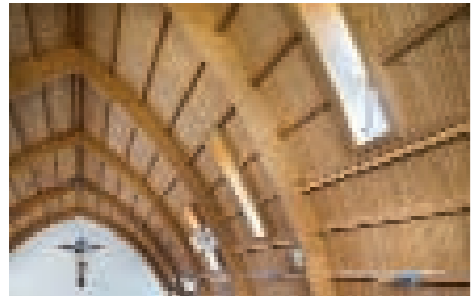
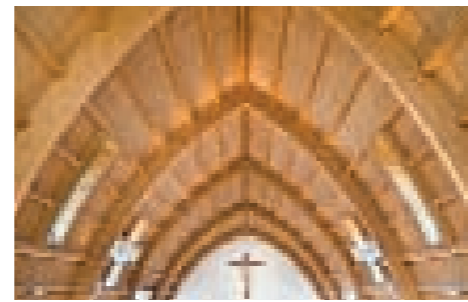
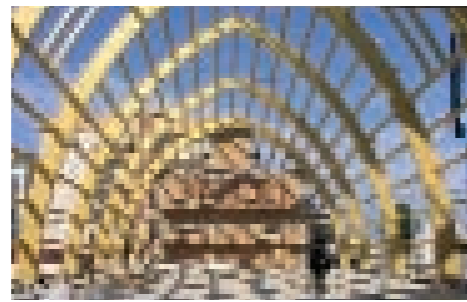
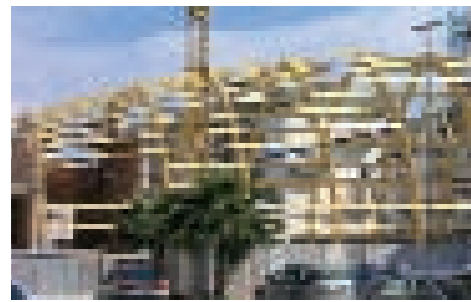
**Superficie / Surface**  
1.000 m<sup>2</sup>

**Luce massima / Max. span**  
20 mt

**Legno lamellare / Glulam**  
80 m<sup>3</sup>

**Acciaio / Steel**  
5.000 Kg





**Località / Location**  
Bisceglie - BAT

**Tipologia / Typology**  
CHIESA / CHURCH

**Sistema statico / Static system**  
PORTALI / PORTALS

**Superficie / Surface**  
1.300 m<sup>2</sup>

**Legno lamellare / Glulam**  
70 m<sup>3</sup>

**Acciaio / Steel**  
2.200 Kg





**Località / Location**  
Torremaggiore - FOGGIA

**Tipologia / Typology**  
CHIESA / CHURCH

**Sistema statico / Static system**  
SISTEMA APPESO  
HUNG SYSTEM

**Superficie / Surface**  
1.300 m<sup>2</sup>

**Legno lamellare / Glulam**  
70 m<sup>3</sup>

**Acciaio / Steel**  
2.200 Kg







**Località / Location**  
 Quartu Sant'Elena - CAGLIARI

**Tipologia / Typology**  
 CHIESA / CHURCH

**Sistema statico / Static system**  
 CUPOLA / DOME

**Superficie / Surface**  
 1.550 m<sup>2</sup>

**Legno lamellare / Glulam**  
 280 m<sup>3</sup>

**Acciaio / Steel**  
 3.800 Kg



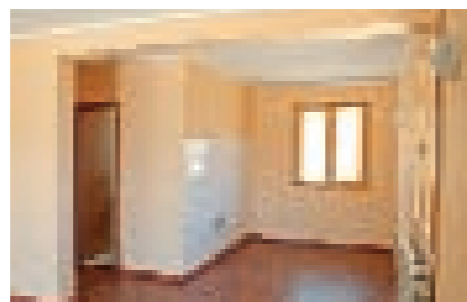
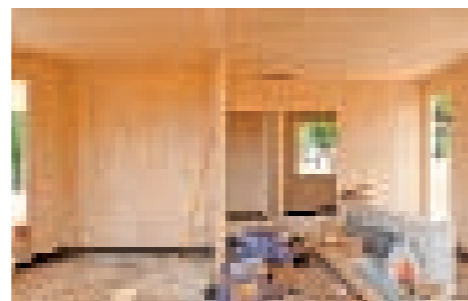
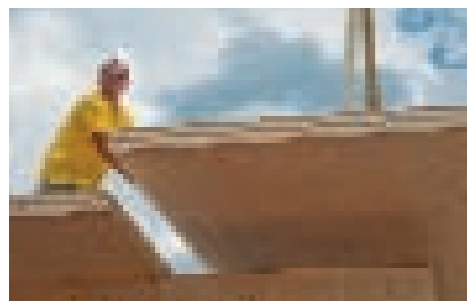
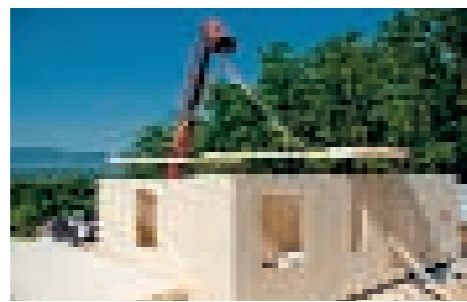


**MODULI  
ABITATIVI**

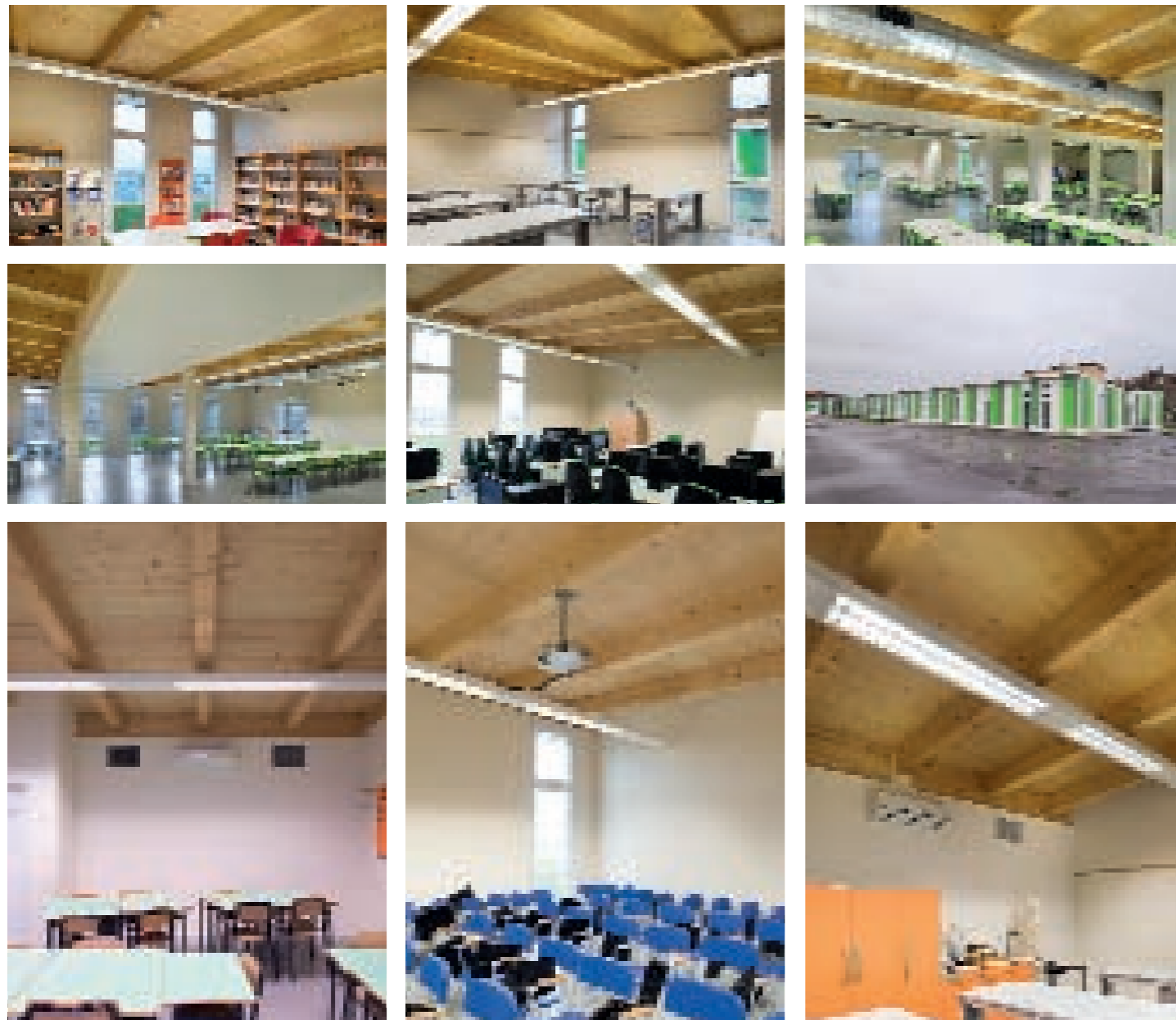
**MODULI  
SCOLASTICI**

**MODULAR  
LIVING BUILDINGS**

**MODULAR  
SCHOOL BUILDINGS**







**Località / Location**  
 Finale Emilia, Mirandola, Concordia  
 MODENA

**Tipologia / Typology**  
 SCUOLA / SCHOOL

**Sistema statico / Static system**  
 TELAIO MISTO / MIXED FRAME

**Superficie / Surface**  
 7.800 m<sup>2</sup>

**Legno lamellare / Glulam**  
 560 m<sup>3</sup>

**Acciaio / Steel**  
 2.700 Kg







**Località / Location**  
BOLOGNA

**Tipologia / Typology**  
SCUOLA / SCHOOL

**Sistema statico / Static system**  
PARETI PORTANTI X-LAM  
LOAD BEARING X-LAM WALLS

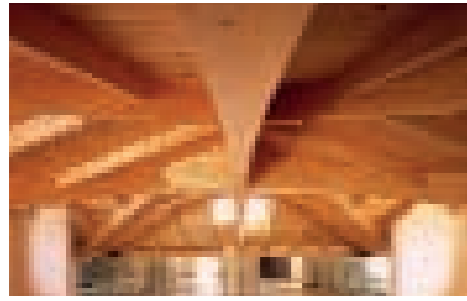
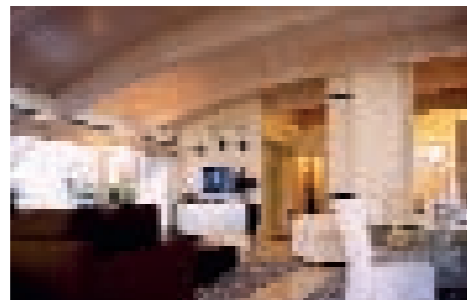
**Superficie / Surface**  
900 m<sup>2</sup>

**Legno lamellare / Glulam**  
220 m<sup>3</sup>

**Acciaio / Steel**  
4.000 Kg

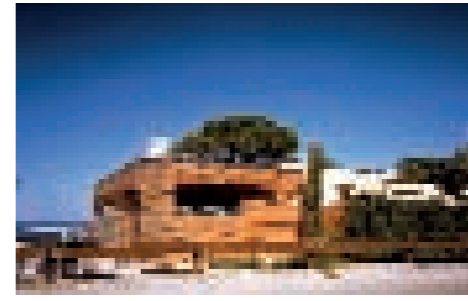
**Pannelli multistrato / 3-ply panels**  
1.500 m<sup>2</sup>





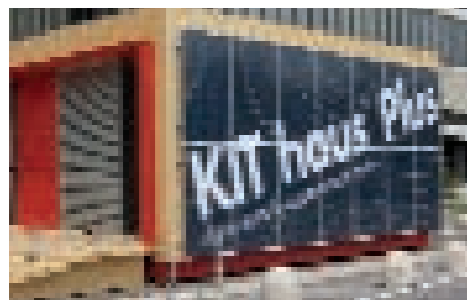
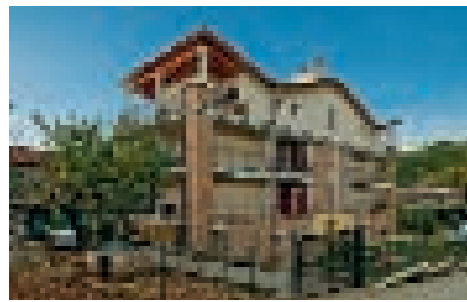
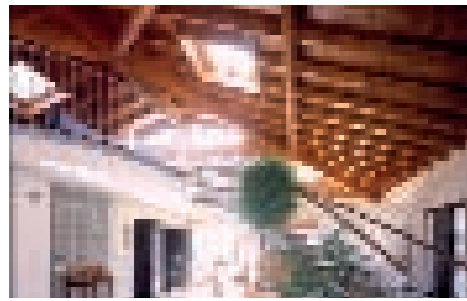
**EDILIZIA  
ABITATIVA**

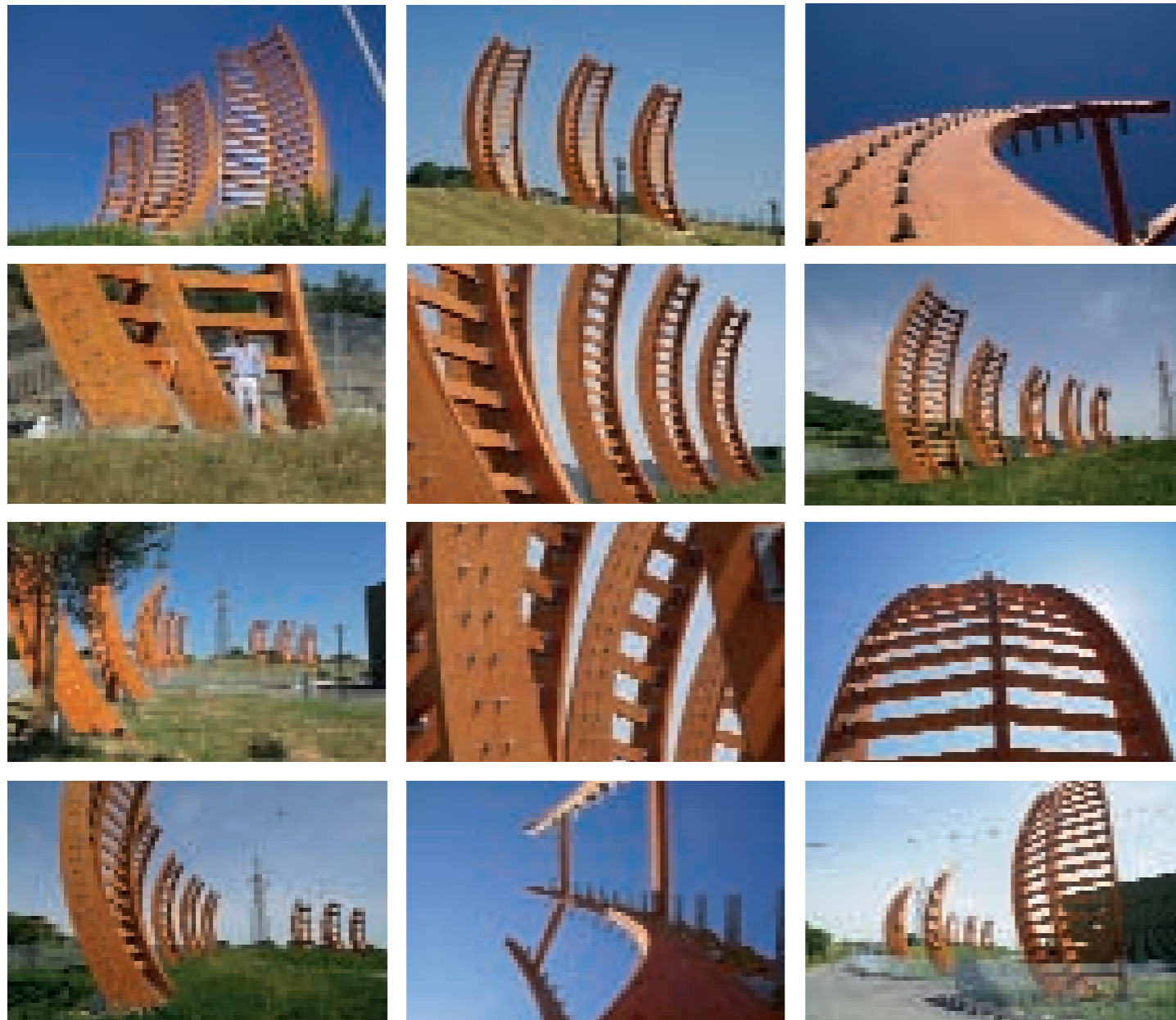
*RESIDENTIAL  
BUILDING*



**STRUTTURE  
RICETTIVE**

*TOURIST  
FACILITIES*





**Località / Location**  
PISA

**Tipologia / Typology**  
SCHERMATURA  
SCREENING ELEMENTS

**Sistema statico / Static system**  
TELAJ CURVI / CURVED FRAME

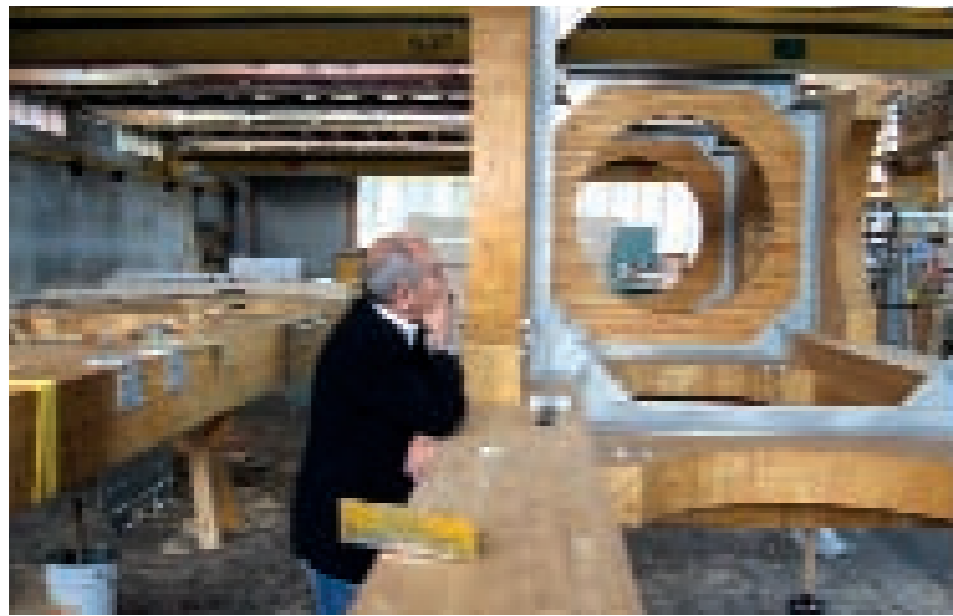
**Numero moduli / Unit Number**  
13

**Altezza massima / Max. height**  
12,40 mt

**Legno lamellare / Glulam**  
130 m<sup>3</sup>

**Acciaio / Steel**  
16.000 Kg

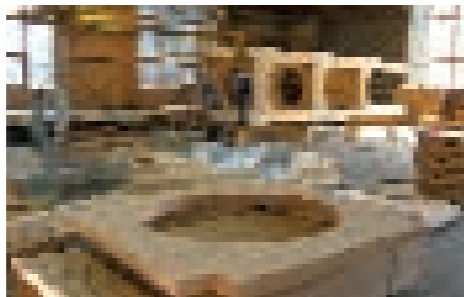




L'artista Mario Ceroli è prima di tutto un pensatore. Utilizzando il legno, in oltre 40 anni di attività ha dato forma e sostanza a capolavori del disegno e della pittura come l'Uomo Vitruviano di Leonardo, il celebre dipinto la Battaglia di S. Romano di Paolo Uccello, i braccianti del Quarto Stato di Pelizza da Volpedo e molti altri.



Mario Ceroli non è solo uno scultore, ma spazia anche nella scenografia teatrale e nelle installazioni monumentali in cui ha dato alti e persuasivi saggi del suo grande talento.



In queste immagini, l'artista supervisiona la produzione della Torre Campanaria di Porto Rotondo. Canducci collabora con l'artista dal 1985.



*The artist Mario Ceroli is first of all a thinker. In more than forty years career, he has given form and substance to paint and design works of art using wood, such as the Vitruvian Man by Leonardo Da Vinci, the famous paintings "The Battle of San Romano" by Paolo Uccello, the farm laborers of "The fourth State" by Pelizza and many others.*

*Mario Ceroli is not only a sculptor, but also a stage designer who has shown his extraordinary talent also in the field of monumental installations. In these pictures the artist supervises the production of Porto Rotondo Bell Tower.*

*Since 1985 Canducci has cooperated with Mario Ceroli.*



**Località / Location**  
Porto Rotondo - OLBIA

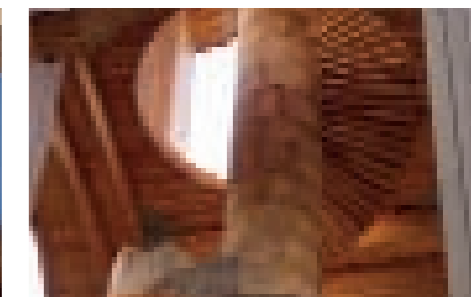
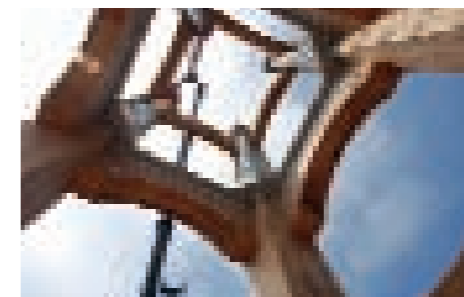
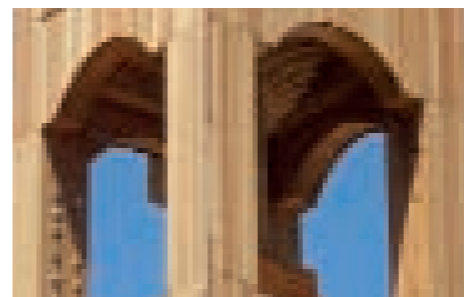
**Tipologia / Typology**  
TORRE CAMPANARIA  
BELL TOWER

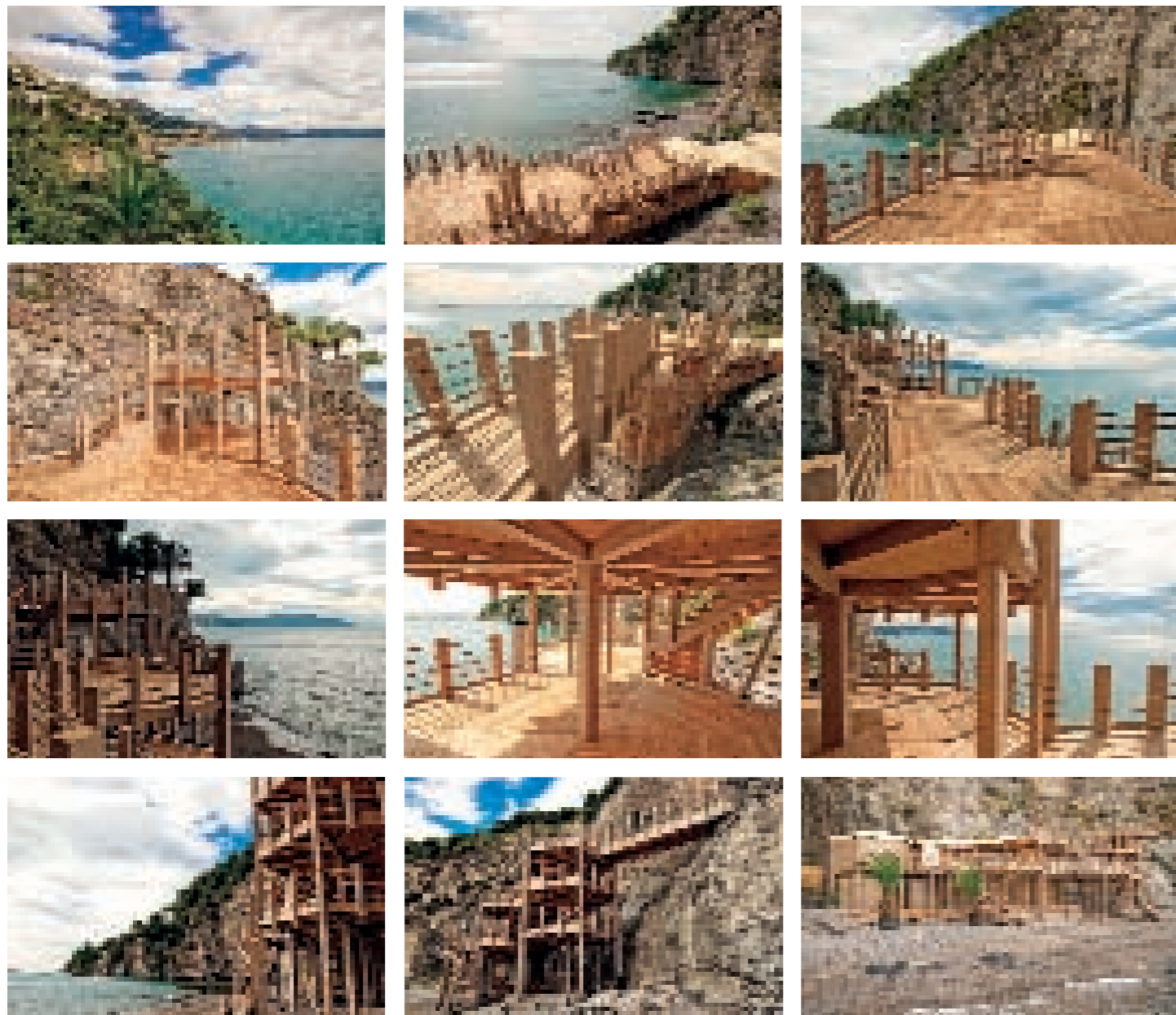
**Sistema statico / Static system**  
TELAIO / FRAME

**Altezza / Height**  
24 mt

**Lamellare di larice / Larch glulam**  
35 m<sup>3</sup>

**Acciaio / Steel**  
5.000 Kg





**Località / Location**  
Vietri - SALERNO

**Tipologia / Typology**  
RESORT

**Sistema statico / Static system**  
TELAIO / FRAMEWORK

**Superficie / Surface**  
600 m<sup>2</sup>

**Legno lamellare / Glulam**  
100 m<sup>3</sup>

**Acciaio / Steel**  
2.800 Kg





**Sede**

Via Montello 4  
61121 PESARO - IT  
T +39 0721 34323  
F +39 0721 33148  
[info@canducci1940.it](mailto:info@canducci1940.it)

**Ufficio di Roma**

Via Po 102  
00198 ROMA - IT  
T +39 06 85358918  
F +39 06 84080505  
[roma@canducci1940.it](mailto:roma@canducci1940.it)



[www.canducci1940.it](http://www.canducci1940.it)